

# Service Information

Mazda Motor Corporation

3-1, Shinchi, Fuchu-cho, Aki-gun  
Hiroshima 730-8670, Japan  
TEL : 81(82)287-5323  
FAX : 81(82)287-5220



Category <b>S</b>	<b>Repair Guidance</b>	Ref. No. R033/11	Page 1 of 3
Coverage <input type="checkbox"/> Distributor only <input checked="" type="checkbox"/> Please inform your dealers		Date Issued May 13, 2011	
Please convey this information to your <input type="checkbox"/> Director <input checked="" type="checkbox"/> General Manager <input checked="" type="checkbox"/> Warranty Dept. <input checked="" type="checkbox"/> Parts Dept. <input checked="" type="checkbox"/> Training Dept. <input checked="" type="checkbox"/> Field Rep.		Date Revised	
Applicable Model  All models with leather seats	Applicable Countries or Specifications  Worldwide		

## Subject: Wrinkles on Leather Seat Surface

### DESCRIPTION

During PDI it may be found, or some customers may complain that some wrinkles occur on seat cushion and/or seatback surface.



### CAUSE

Seat surface material is stretched.

### MASS PRODUCTION CHANGE

No mass production change.

## REPAIR PROCEDURE

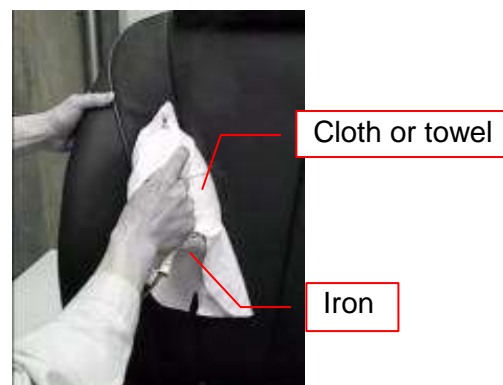
When you encounter this concern, remove the wrinkles on the seat surface as per following procedure.

Note: In case of customer complaint, explain to the customer before performing the repair that the wrinkles may not be completely removed.

Also explain that, the older it gets the more wrinkles tend to appear on leather surface due to aging or wear during normal use, which is normal behavior of the material

1. Heat an iron to 140 -180 °C.
2. Stretch the wrinkled point of seat surface by hand.
3. Sufficiently spray water on a cloth/towel with a spray bottle.
4. Wrap the bottom of iron by the water-soaked cloth.
5. Run the iron with the cloth on the wrinkled point.

Note: Always keep the cloth wet. Spray water on the cloth repeatedly before the cloth dries.



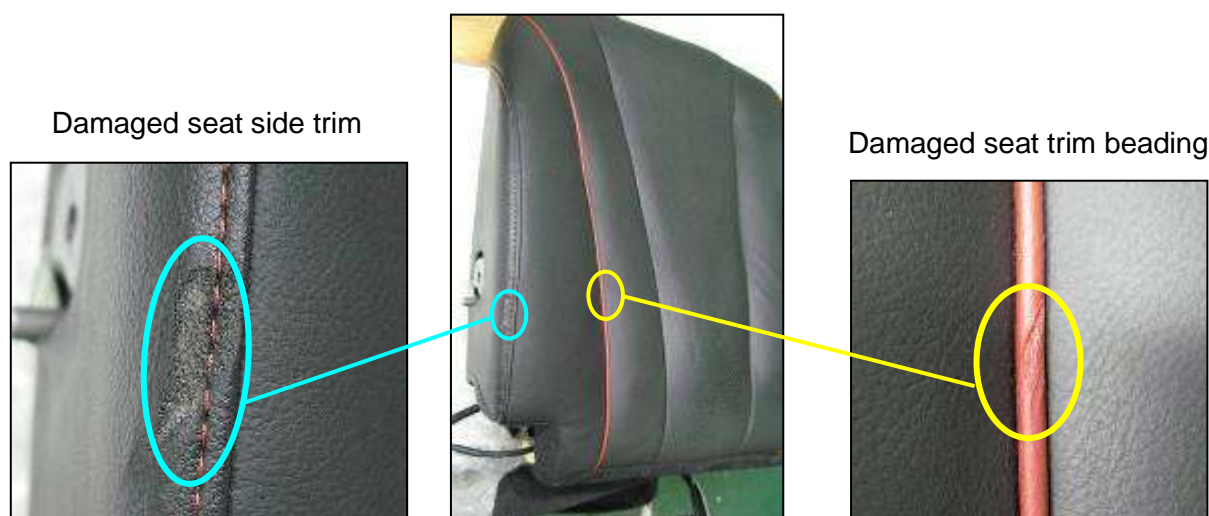
Before



After



**Caution: Do NOT keep the iron at the same place for a long time / run the iron without a water-soaked cloth especially over seat trim beading and seat side trim area. Failure to do so may damage the seat surface as shown below.**



WARRANTY INFORMATION

Assembly group	S - Body
Subassembly group	09 - SEATS & SEAT BELTS
Symptom Code	87
Damage Code	9E
Causal Part No.	Refer to part catalog and find part number of concerned seat
Q'ty	0
Operation No. & Labor Hours	XXG23ARX & 0.2 Hrs (1 seat) XXG23BRX & 0.3 Hrs (2 seats) XXG23CRX & 0.4 Hrs (3 seats) XXG23DRX & 0.5 Hrs (4 & 5 seats) XXG23ERX & 0.6 Hrs (6 seats) XXG23FRX & 0.7 Hrs (7 seats)
Period Covered	Normal Warranty Period

Shinji Kanai  
Manager, Technical Information Gr.  
Technical Service Dept.  
Mazda Motor Corporation  
2B10661933 (MC Internal Use)